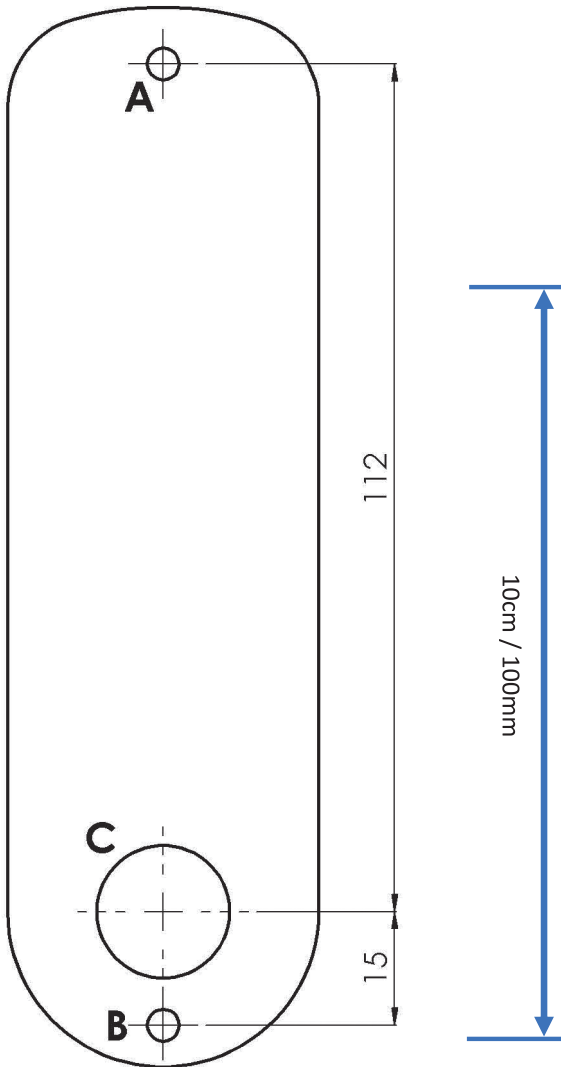


IF USING A PRINTED TEMPLATE ENSURE THAT THE TEMPLATE IS THE CORRECT SIZE AS PRINTERS VARY



IF USING A PRINTED TEMPLATE,  
PLEASE CHECK THIS DIMENSION IS CORRECT

10cm / 100mm

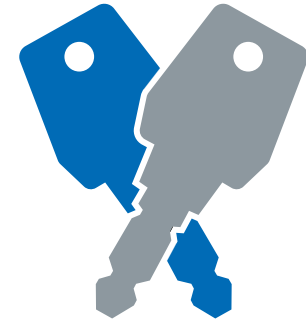
Call Here



Holes **A** & **B** diameter 4.5 / 5.0mm  
Hole **C** diameter 17.0 / 17.5mm  
Recommended screw fixing torque 0.5Nm min.

### IMPORTANT NOTE

Before drilling fixing holes, please ensure that the position of the Digital Combination Lock when fitted will allow clearance for the cam to function.



## INSTALLATION INSTRUCTIONS

### 3781 - WET AREA Digital Combination Lock Surface Mounted

Lowe & Fletcher Ltd  
Moorcroft Drive  
Wednesbury, West Midlands  
WS10 7DE, England

T: + 44 (0) 121 505 0400  
F: + 44 (0) 121 505 0420  
E: [sales@lowe-and-fletcher.co.uk](mailto:sales@lowe-and-fletcher.co.uk)  
W: [www.lowe-and-fletcher.co.uk](http://www.lowe-and-fletcher.co.uk)

**L&F** A Lowe & Fletcher Group Company

9224632 - INSTALLATION INSTRUCTIONS - June 2019

[lowe-and-fletcher.co.uk](http://lowe-and-fletcher.co.uk)

# INSTALLATION INSTRUCTIONS

## 3781 – WET AREA DCL

### Fitting Instructions

The Digital Combination Lock can be fitted to cupboards, cabinets and lockers etc. as an original fitment, or as a direct replacement for existing cam locks.

### Special Notes

Before installing the Digital Combination Lock, load the batteries and familiarise yourself with the operation and programming. Unless manufactured to special order the lock is supplied in the "PRIVATE" operating mode. In this mode, the user must enter a four-digit User Code to open it. The unit will re-lock itself after four seconds. The lock can be opened at any time using the Master Code. Unless manufactured to special order the default MASTER CODE is 11 33 55 77 and the default USER CODE is 22 44.

**These codes are common to all standard locks and it is very important that you set your own personal Master and User codes. Your lock is not secure until you have changed the default Master code and User code. Keep a safe record of your master code as it is not possible to make any programming changes without it.**

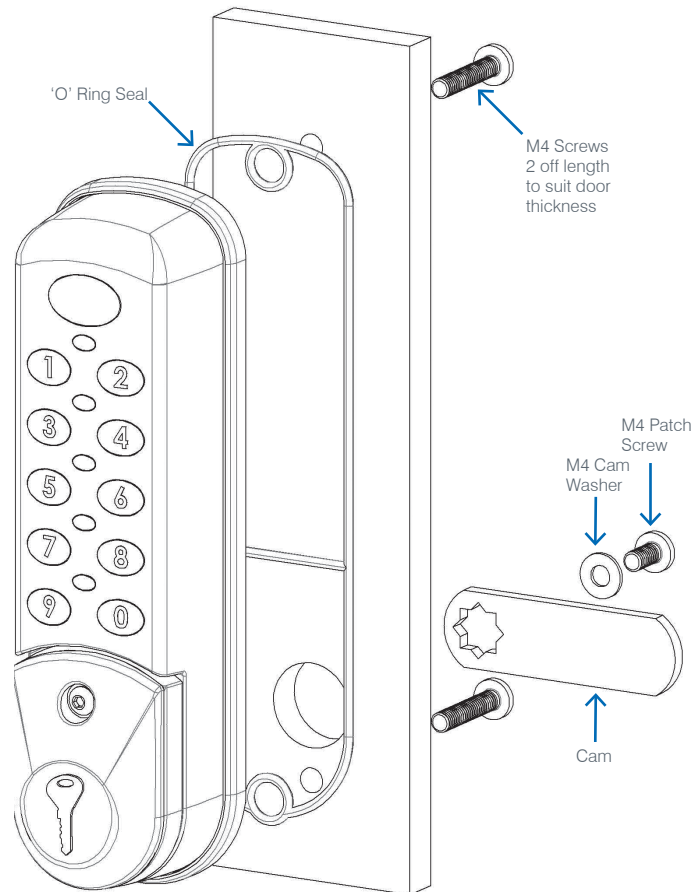
Please see programming guide to set your own codes.

### Installation Guide

Before drilling fixing holes, please ensure that the position of the lock when fitted will allow clearance for selected cam to work.

### ENSURE BATTERIES ARE CORRECTLY FITTED BEFORE FIXING TO CLOSURE

- Step 1** Place template on door and mark TWO 4.5mm (3/16") holes (refer to installation template). Mark ONE 17mm (11/16") hole position 'C'.
- Step 2** Drill all fixing holes.
- Step 3** Fit the Digital combination lock to the door ensuring 'O' Ring seal is in place.
- Step 4** Fit the two M4 fixing screws length to suit your door thickness.
- Step 5** Tighten screws to a minimum torque of 0.5Nm.
- Step 6** Select the cam which suits your door and frame and attach it to the square shaft at the end of the spindle using the M4 patch screw and flat washer provided.
- Step 7** Check the operation of the lock using the factory User Code 22 44.
- Step 8** If the lock is functioning correctly CHANGE THE DEFAULT MASTER CODE 11 33 55 77 and DEFAULT USER CODE 22 44 and program the lock using the programming and operating instructions enclosed.



Holes **A** & **B** diameter 4.5 / 5.0mm  
Hole **C** diameter 17.0 / 17.5mm  
Recommended screw fixing torque 0.5Nm min.

### Emergency Override key access

To access the key override, Unscrew and remove M3 button screw, Lift off cap.

Insert key into Barrel, turn 90° to open your locker door.  
Ensure Cap and screw re-fitted to protect lock from water.

